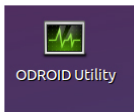


# Getting Started with ODROID-XU4

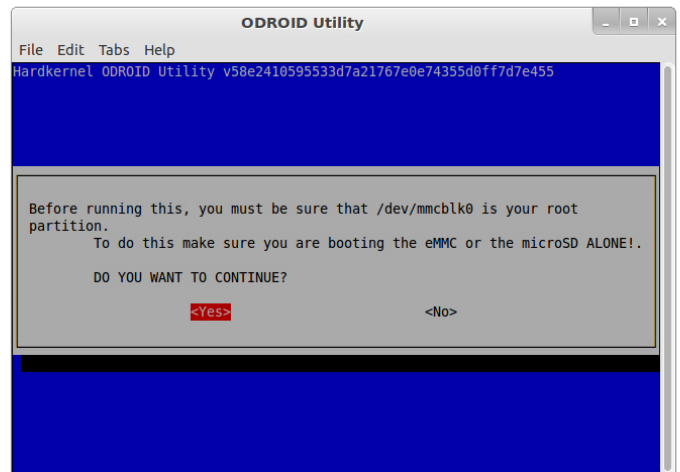
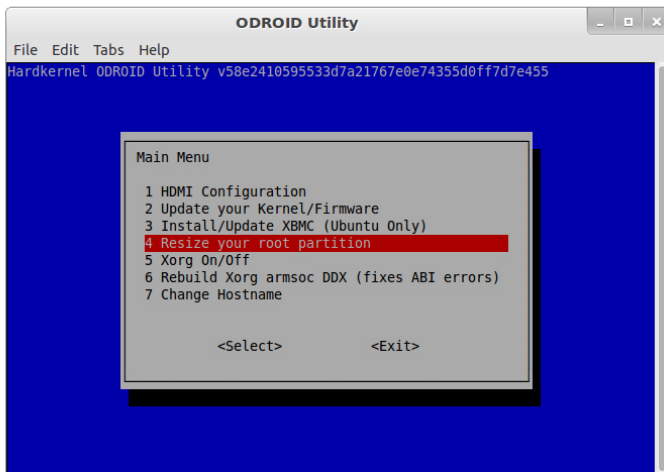
## WHAT YOU WILL NEED

- Insert the microSD card or eMMC module with the OS pre-imaged on it into the XU4. You can download the OS from Hardkernel. The minimum capacity of 8GB is required. See the wiki at <http://odroid.com/dokuwiki> for more details.
  - Move the boot selector switch to the appropriate position for your card (microSD/eMMC).
  - Connect a monitor or a TV
  - Attach a keyboard, mouse and Ethernet cable.
  - Connect the 5V4A power supply. The XU4 will boot up as soon as it is attached.
  - STATUS INDICATORS(LEDs)
    - PWR : Red : Hooked up to 5V power
    - ALIVE : Blue : Solid light : u-boot is running
    - Flashing(heart beat) : Kernel is running
- Note : If the red LED is not on, the XU4 is not getting the proper power  
If the blue LED is not on, check your microSD or eMMC module



The system configuration can be modified using the ODROID Utility on the desktop.  
Username : **odroid**  
Password : **odroid**

When you first boot up the ODROID-XU4 with Linux, it is very important to select the option [Resize your root partition] using the ODROID Utility. This will enlarge the file system allowing use of the whole eMMC or microSD card. The Ubuntu distribution uses about 5GB of storage space, so keep this in mind when selecting a card capacity.



Once the ODROID Utility configuration is complete, the system must be rebooted for the changes to take effect.

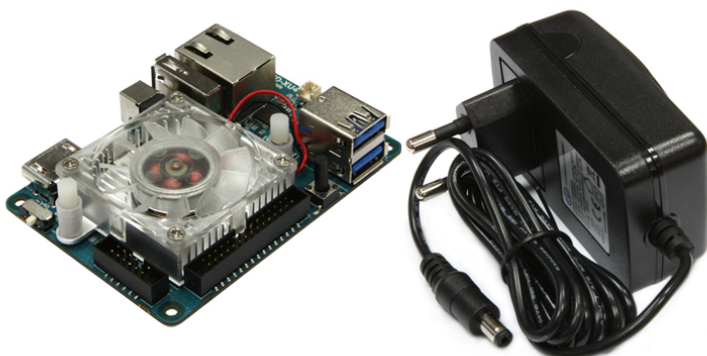
All the latest information and OS distributions are released through our forum. If you need any technical help, please visit the forum.

Forum : <http://forum.odroid.com>

WiKi : <http://odroid.com/dokuwiki/>

Please read ODROID Magazine for helpful information and projects! <http://magazine.odroid.com/>

Note that OS images for the XU3 are compatible with the XU4 in most cases.



# ODROID-XU4